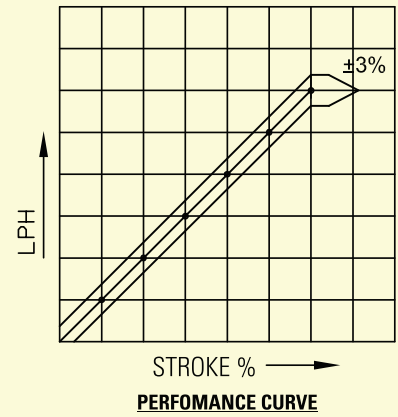




## Model: VHJD-02 Hydraulically Operated Diaphragm Type Dosing Pumps



### SELECTION CHART

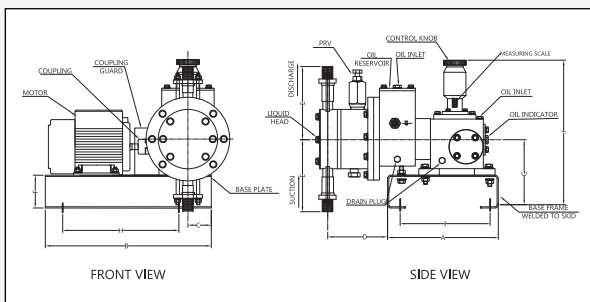
PUMP SPEED – 100 SPM (NOMINAL) GEAR RATIO 15:1 MOTOR 1500 RPM				PL. Dia mm	Max. Pr. Kg/cm <sup>2</sup>	PUMP SPEED – 100 SPM (NOMINAL) GEAR RATIO 8:1 MOTOR 1500 RPM			
Cap LPH	Suc. Del. mm NB/BSP	% OF Max. Pr.	Motor K.W.			Cap LPH	Suc. Del. mm NB/BSP	% OF Max. Pr.	Motor K.W.
31	15	ALL	0.75	20	99	68	15	100	0.75
49	15			24	69	98	15		
87	15			32	38	174	15		
136	15			40	25	271	25		
164	25			44	20	328	25		
195	25	1.1	1.1	48	17	391	25	50	1.1
247	25			54	13	495	25		
326	25			62	10	652	40		
358	25			65	9	716	40		
381	25			67	8	761	40		

### MOC CHART

Sr. No.	Description	MOC	Sr. No.	Description	MOC
01	PLUNGER	EN 8	4	NRV SEALING RING	PTFE
02	LIQUID HEAD				
03	NON RETURN	SS304, SS316, ALLOY20, P.P, PVC, PTFE	5	NRV BALLS	SS,PTFE, Glass, Ceramic

### FEATURE

- Multiple head pumps with common drive for mixing two or more liquid in a desired ratio. The ratio can be easily reset
- The design and performance of VHJD series pumps conforms to API675



### DIMENSIONS IN MM

A	B	C	D	E	F	G	H	I	J
340	460	70	165	170	75	190	360	300	450

**WEIGHT (App) : 77 Kg**  
**PACKING SIZE : 24 x 22 x 17 Inches**

